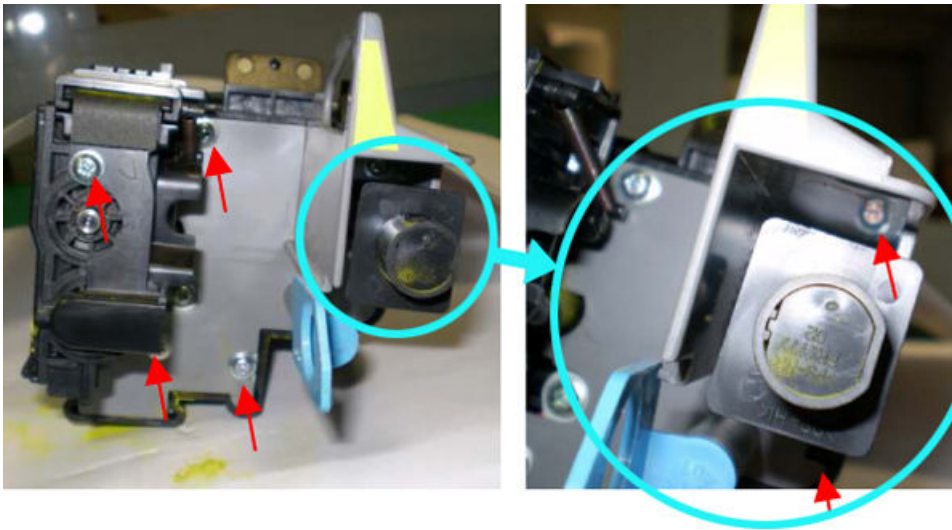
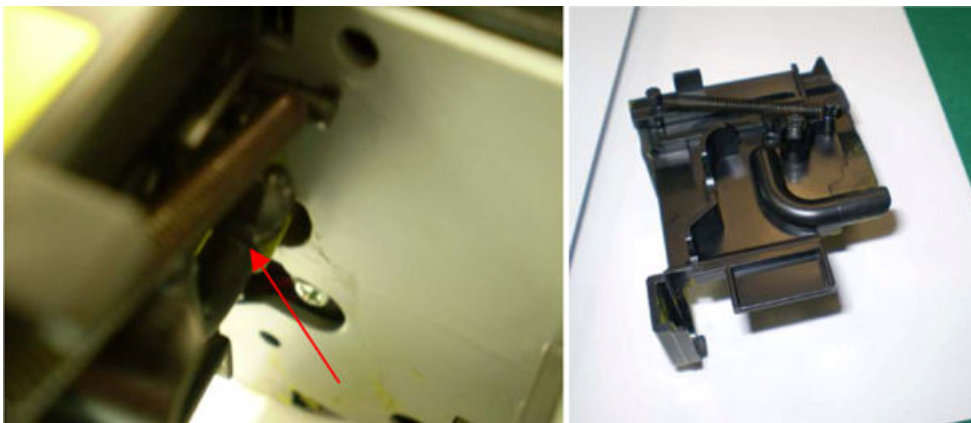


## Replacement Manual

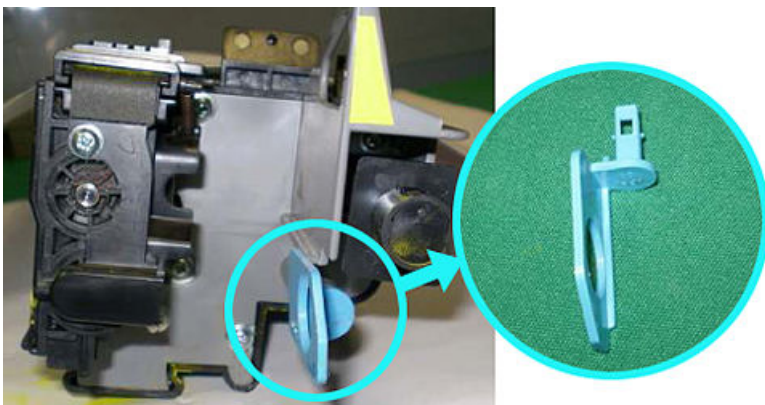
FOR Minolta Bizhub C452/C552/C652 Imaging Unit C,M, or Y chips



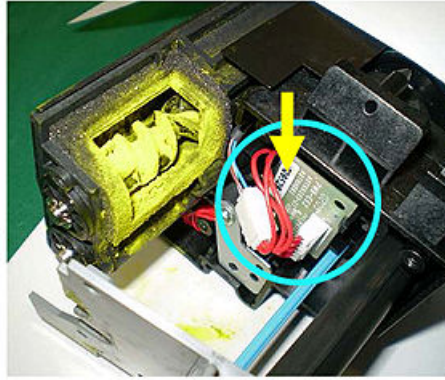
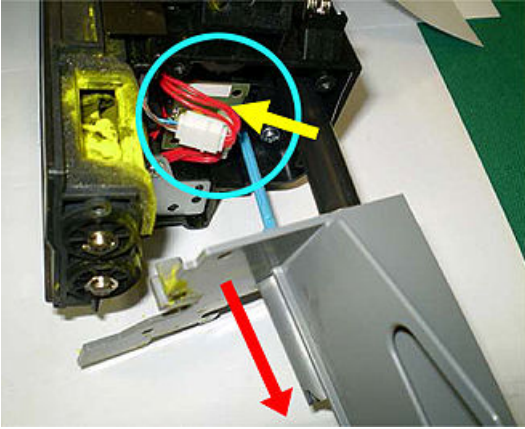
**(1) Remove these screws**



**(2) Then disconnect the tube of the PIPE, and remove the sliding door.**

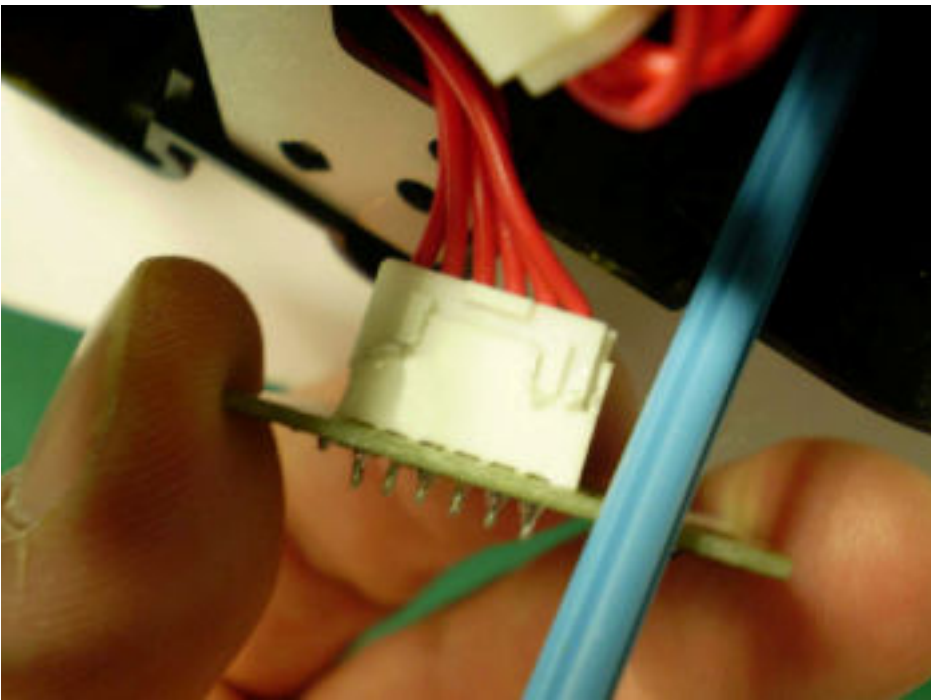


**(3) Remove the handle of the Cleaner.**



**(4) Move carefully the grey cover on the front.**

**Now is possible to see the OEM chip.**



**(5) Take out the OEM chip and install compatible new chip.**