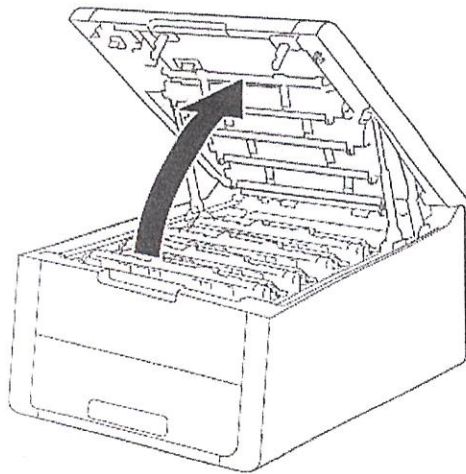


## How do I install a new **belt** unit? How do I replace the **belt** unit?

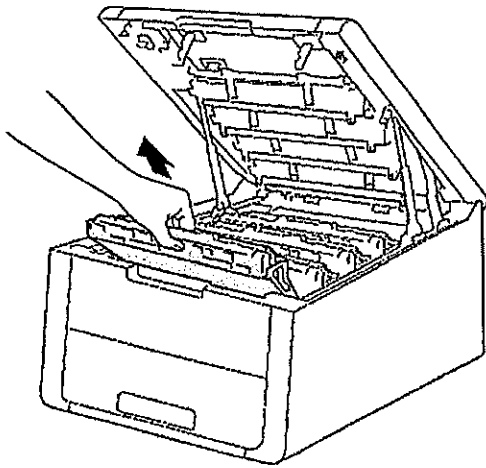
**NOTE:** When possible, the **belt** should be replaced only when the message REPLACE **BELT** appears on the display in order to obtain maximum life from the **belt** unit and ensure accurate tracking of the **belt** life from the machine.

1. Make sure the machine is turned on.
2. Lift the top cover using the indented handle in the center until you hear a click.



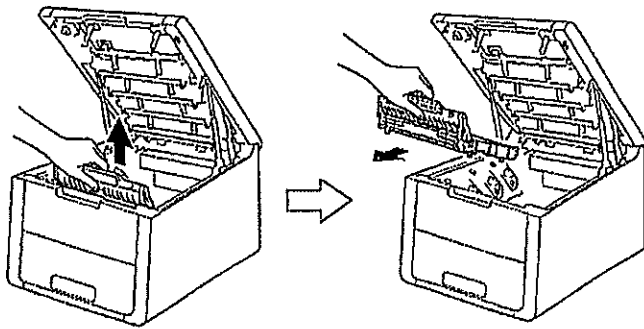
**IMPORTANT:** The top cover must ALWAYS be completely open when removing or installing consumables. Failure to completely open the top cover may cause damage to the machine.

3. Take out all 4 color drum and toner cartridge assemblies. Each drum unit and toner assembly can be removed by grasping the center of the drum and toner assembly and pulling it straight up. Place the drum unit and toner cartridge assemblies on a piece of disposable paper or cloth to avoid spilling and scattering the toner.



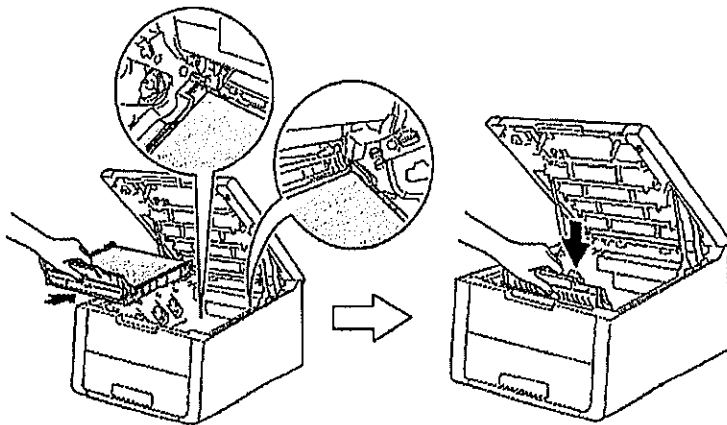
4. Hold the green handle of the **belt unit** and lift the **belt unit** up, then pull it out.

**Caution:** In order to prevent print quality problems, **DO NOT** touch the black surface of the **belt unit**.

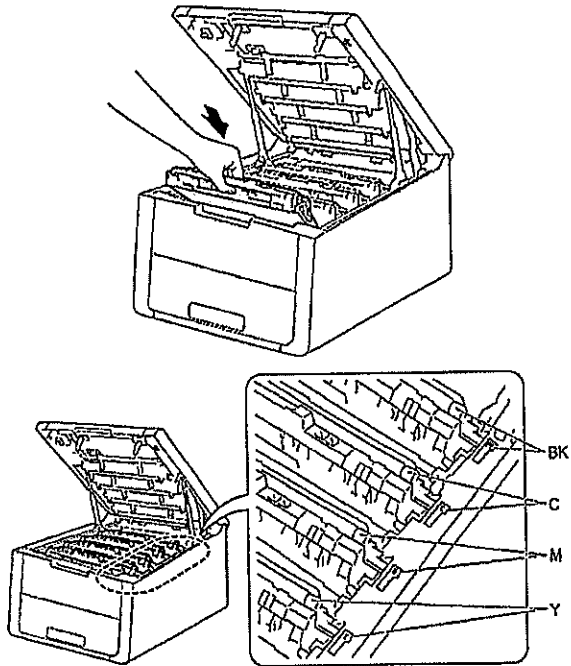


5. Unpack the new **belt unit** and put the new **belt unit** in the printer.

**NOTE:** The **belt** does not lock in place. Simply place the **belt unit** in the machine.



6. Reinstall the drum unit and toner cartridge assemblies into the machine by sliding them into the correct slot by matching the toner cartridge color to the same color label on the machine.



7. Close the top cover of the machine. You will hear a loud click when the top cover is closed firmly.

**NOTE:** When you replace the belt unit with new one, you need to reset the belt unit counter.

8. Reset the belt counter as follows:

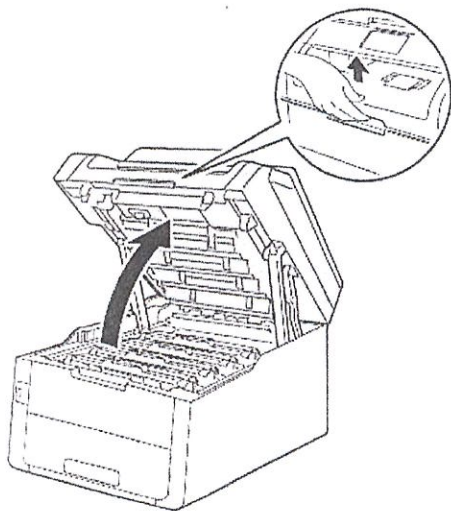
**NOTE:** The reset option may not be present if the belt is replaced before the useful life has expired.

- a. Press the **PLUS/UP ARROW** while holding down **GO** on the control panel of the machine.
- b. Press the **PLUS/UP ARROW** or **MINUS/DOWN ARROW** key to display **Belt Unit**. Press **OK**.
- c. Press the **PLUS/UP ARROW** for **Reset**.

## How do I install a new belt unit? How do I replace the belt unit?

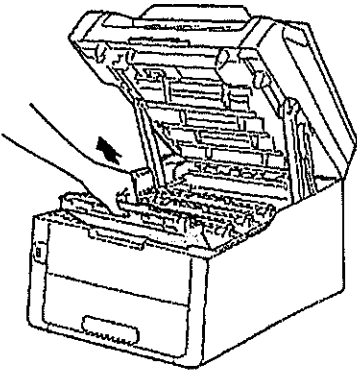
**NOTE:** When possible, the belt should be replaced only when the message REPLACE BELT appears on the display in order to obtain maximum life from the belt unit and ensure accurate tracking of the belt life from the machine.

1. Make sure the machine is turned on.
2. Lift the top cover using the indented handle in the center until you hear a click.



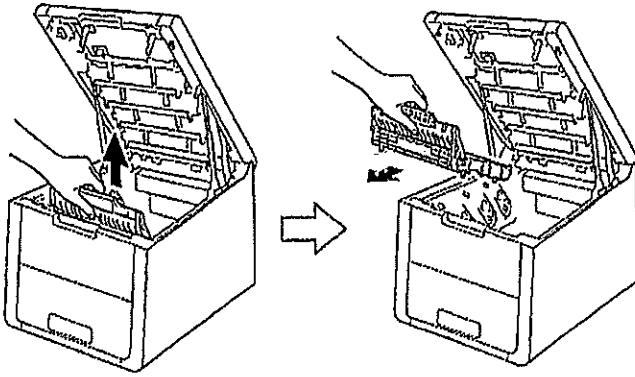
**IMPORTANT:** The top cover must ALWAYS be completely open when removing or installing consumables. Failure to completely open the top cover may cause damage to the machine.

3. Take out all 4 color drum and toner cartridge assemblies. Each drum unit and toner assembly can be removed by grasping the center of the drum and toner assembly and pulling it straight up. Place the drum unit and toner cartridge assemblies on a piece of disposable paper or cloth to avoid spilling and scattering the toner.



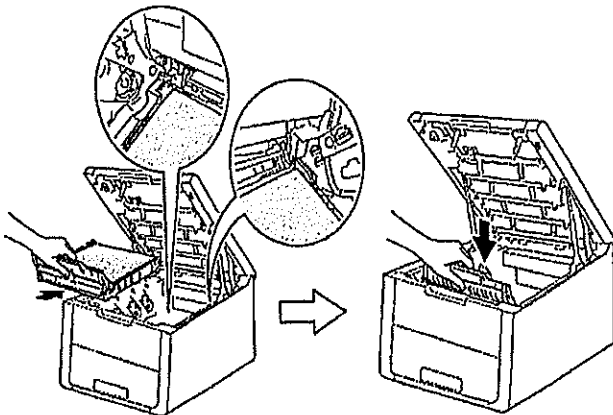
4. Hold the green handle of the belt unit and lift the belt unit up, then pull it out.

**Caution:** In order to prevent print quality problems, DO NOT touch the black surface of the belt unit.

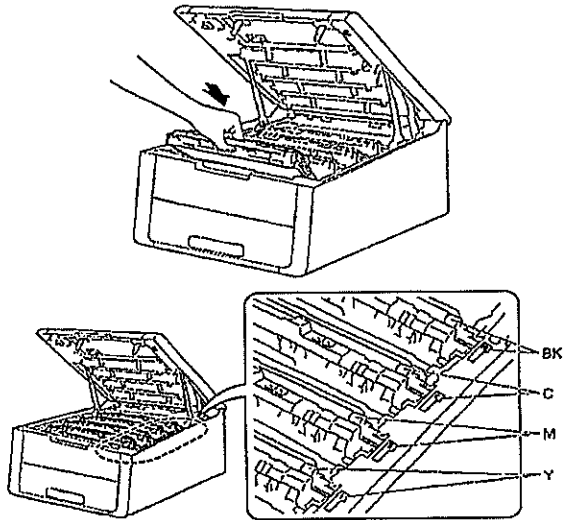


5. Unpack the new belt unit and put the new belt unit in the printer.

**NOTE:** The belt does not lock in place. Simply place the belt unit in the machine.



6. Reinstall the drum unit and toner cartridge assemblies into the machine by sliding them into the correct slot by matching the toner cartridge color to the same color label on the machine.



7. Close the top cover of the machine. You will hear a loud click when the top cover is closed firmly.

**NOTE:** When you replace the belt unit with new one, you need to reset the belt unit counter.

8. Reset the belt counter as follows:

**NOTE:** The reset option may not be present if the belt is replaced before the useful life has expired.

a. Press the Red  to interrupt the error temporarily.

b. Press 

c. Press **All Settings**.

d. Swipe up or down, or press the **UP OR DOWN ARROW** to display **Machine Info**.

e. Press **Machine Info**.

f. Press **Parts Life**.

g. Touch the dial pad area to light up the LEDs.

h. Press **#** until the touch-screen message changes.

i. Press **Belt Unit**.

j. Press **Yes**.

k. Press 